

# Phase Shifters

Adapters Attenuators Couplers

DC Blocks

Detectors

Isolators & Circulators

**Phase Shifters**

Power Dividers and Hybrids

Terminations (50 Ohm Loads)

Waveguide

## Type N (F) 1 to 12.4 GHz 200W Precision Control Phase Shifters



### Features

- Broadband Coverage - 180° Phase Shift at Minimum Frequency
- Low VSWR
- +/- 0.5°/GHz Accuracy with Digital Dial Readout

### Models

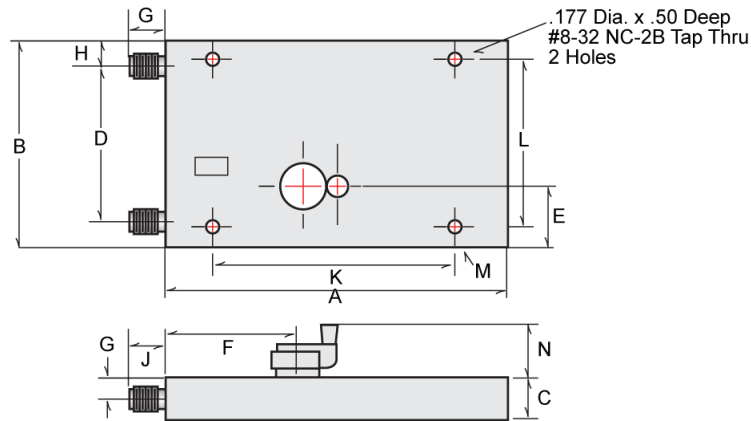
- 3752, 3753B

Model	3752	3753B
Low Frequency (GHz)	1.0	3.5
High Frequency (GHz)	5.0	12.4
Minimum Phase Shift	180 Deg. at 1 GHz	180 Deg. at 3.5 GHz
Average Power (W)	200	200
Peak Power (kW)	5	5
Insertion Loss dB (max)	0.5	0.7
VSWR (max)	1.25	N/A
VSWR (Max) 3.5-10 GHz	N/A	1.35
VSWR (max) 10-12.4 GHz	N/A	1.4
Accuracy (in Deg./GHz)	+/-0.5	+/-0.5
Weight (max) in lbs	4.5	3.3
Weight (max) in kg	2.05	1.5

# Phase Shifters

Adapters Attenuators Couplers DC Blocks Detectors Isolators & Circulators **Phase Shifters** Power Dividers and Hybrids Terminations (50 Ohm Loads) Waveguide

## Type N (F) 1 to 12.4 GHz 200W Precision Control Phase Shifters



Outline Drawings For Models : 3752, 3753B

Units	A	B	C	D	E	F	G	H	J	K	L	M (Dia.)	N
<b>3752</b>													
in.	9.03	5.53	1.12	4.13	1.56	3.75	0.56	0.68	0.75	6.00	5.13	0.177	1.50
mm	229.36	140.46	28.45	104.90	39.62	95.25	14.22	17.27	19.05	152.40	130.30	4.496	38.10
<b>3753B</b>													
in.	6.72	4.69	1.28	3.50	1.59	1.13	0.75	0.58	1.22	4.50	4.31	0.177	1.50
mm	170.69	119.13	32.51	88.90	40.39	28.70	19.05	14.73	30.99	114.30	109.47	4.496	38.10

**Notes:**

All dimensions are max. unless otherwise specified.